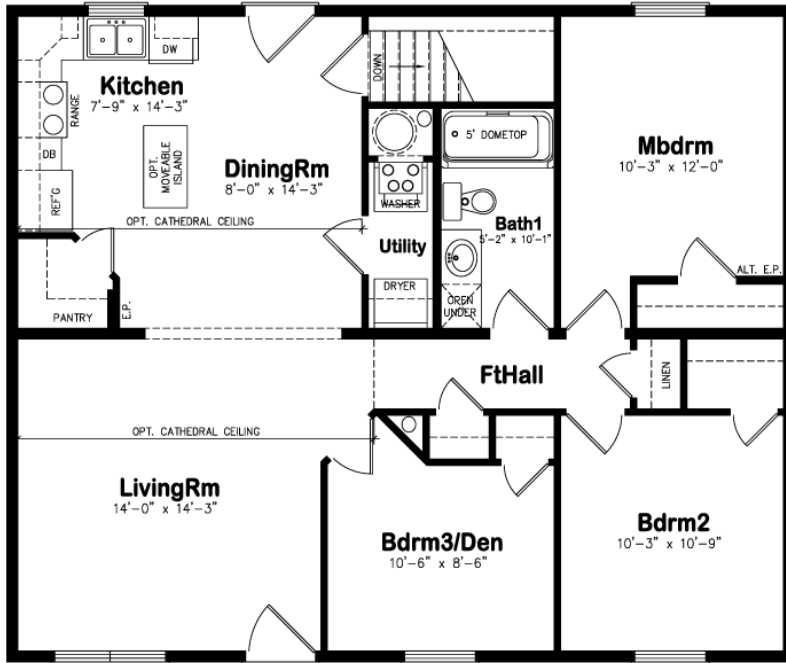


SH-001



SH-001



3 bedrooms | 1 bathroom | 1080 sq ft | Ranch
Elevation A | 36' x 30'

Features include:

- Open-concept kitchen and dining room
- Efficient L-shaped kitchen design with walk-in corner pantry and optional moveable island
- Laundry/utility room off of kitchen
- Large casework opening between living room and kitchen/dining room
- Spacious master bedroom with large closet
- Second bedroom with walk-in closet
- Third bedroom can be a den
- Main bathroom with one-piece 5' dome top tub
- Optional cathedral ceilings

*All pricing is contingent upon a site inspection and final design choices.
Prices and floor plan details are subject to change without notice.



Base Model



Elevation A



Elevation B



Elevation C

Schiavi Home
754 Main St Oxford
ME 04270

P: 207-539-9600
E: sales@schiavihome.com
www.schiavihome.com

SCHIAVI
HOME