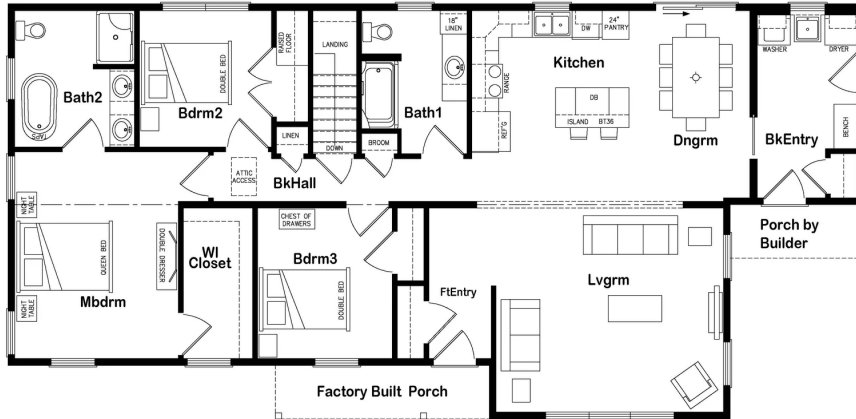


SH-003



SH-003



3 bedrooms | 2 bathroom | 1680 sq ft | 64' x 27'

Features include:

- Split-raised roofline with double dormer
- Factory-built front porch with railings
- Triple window with tapered vault ceiling in living room
- Kitchen island with 36" bartop
- Primary bedroom with large walk-in closet
- Ensuite bathroom features dual sinks, free-standing tub, and shower
- Spare bedrooms with large closets
- Convenient back entry with coat closet, window seat, and laundry area

*All pricing is contingent upon a site inspection and final design choices.
Prices and floor plan details are subject to change without notice.



Schiavi Home
754 Main St Oxford
ME 04270

P: 207-539-9600
E: sales@schiaivihome.com
www.schiaivihome.com

SCHIAVI
HOME