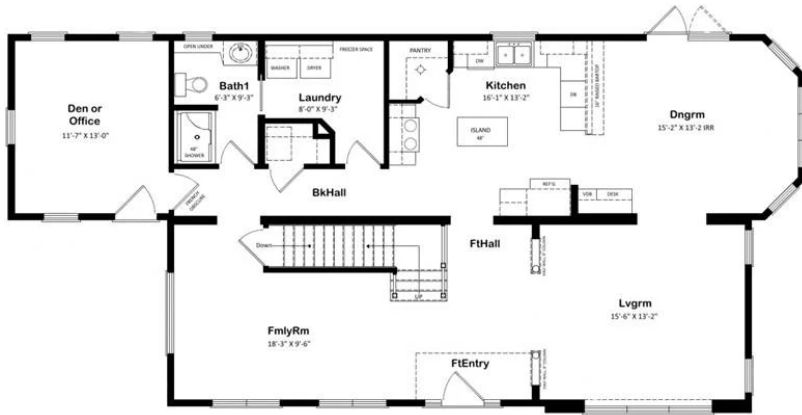


SH-005



SH-005



4 bedrooms | 3 bathroom | 2756 sq ft | 50'/44' x 28'

Features include:

- Front entry with large covered porch
- Efficient U-shaped kitchen design has island with flat bartop and walk-in pantry
- Spacious family room and living room area
- Large dining room, ideal for entertaining, features garden doors and an abundance of windows
- Laundry area conveniently located on main level
- Den or office space on main floor with access to outdoors
- Master bedroom has vaulted ceiling, walk-in closet, and spa-like ensuite
- Sitting room on second floor has vaulted ceiling
- Ample closet space throughout second floor

*All pricing is contingent upon a site inspection and final design choices. Prices and floor plan details are subject to change without notice.

Schiavi Home
754 Main St Oxford
ME 04270

P: 207-539-9600
E: sales@schiavihome.com
www.schiavihome.com

SCHIAVI
HOME